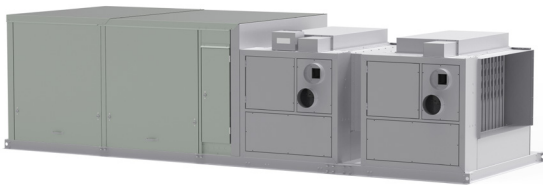
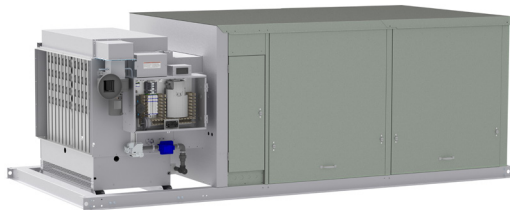


## Indirect Fired Make-Up Air Units

EFFICIENT AND COST EFFECTIVE SOLUTION FOR HEATING AND MAKE-UP AIR



### PRODUCT SPECIFICATIONS

- Available as Indoor Power Vented, Indoor Separated Combustion, or Outdoor Power Vented
- Available in 16 model sizes with input ranges from 100,000 to 1,200,000 Btu/Hr.
- Airflow ranges from 750 to 14,500 CFM
- Natural or propane gas
- All units a minimum of 81% thermally efficient
- 20°-100°F air temperature rise on single furnace units
- ETL certified
- Superior corrosion resistance and extended equipment life with 18-gauge, polyester-powder paint on an aluminized steel casing (indoor units are unpainted aluminized steel on the duct furnace section)
- Blower and motor vibration isolation
- Blower performance up to 3.0" W.C. is perfect for longer ductwork or accessories with high-pressure drops
- Quick and accurate field connections with separate line and low-voltage terminal strips with job specific wiring diagrams
- Available with optional Modine Controls System, an advanced programmable microprocessor based control system with ability to operate stand-alone or networked with BACnet compatibility

## INDIRECT FIRED DUCT FURNACE AND MAKE-UP AIR UNIT

Airedale offers a complete line of both indoor and outdoor heating and ventilating equipment including gas-fired gravity vented, power vented, and separated combustion duct furnace/make-up air units.

Depending on the requirements of the application, the duct furnace can be ordered either by itself, or with a blower section. If ordered with a blower section, a cooling coil section and/or a downturn can also be added to the configuration. With these configurations, the units can satisfy a building's heating, make-up air, cooling, or ventilating requirements.



### PERFORMANCE CAPABILITIES

Model Size	Input (Btu/Hr)	Output (Btu/Hr)	"Min Airflow" CFM	Max Temp Rise (°F)	Maximum Air Flow		
					Digit 2=F	Digit 2=B or D	Digit 2=C or P
100	100,000	81,000	750	100	3,750	3,750	2,206
125	125,000	101,250	938	100	4,688	4,688	2,206
150	150,000	121,500	1125	100	5,625	5,556	2,521
175	175,000	141,750	1312	100	6,563	5,556	2,521
200	200,000	162,000	1500	100	7,500	6,500	3,352
225	225,000	182,250	1687	100	8,438	6,500	3,352
250	250,000	202,500	1875	100	9,375	9,375	3,724
300	300,000	243,000	2250	100	11,250	11,250	3,724
350	350,000	283,500	2625	100	13,125	12,000	5,214
400	400,000	324,000	3000	100	15,000	12,000	5,214
500	500,000	405,000	3125	120	N/A	9,375	N/A
600	600,000	486,000	3750	120	N/A	11,250	N/A
700	700,000	567,000	4375	120	N/A	13,000	N/A
800	800,000	648,000	5000	120	N/A	14,500	N/A
840	1,050,000	850,500	6562	120	N/A	13,000	N/A
960	1,200,000	972,000	7500	120	N/A	14,500	N/A

1. Ratings are shown for elevations up to 2000 ft. For higher elevations the input rating should be reduced at the rate of 4% for each 1000 feet above sea level.
2. For Canada, in elevations between 2000 and 4500 feet, the unit must be derated to 90% of the rating listed above.
3. For Cooling and Variable Air Movement Applications, refer to Breeze.