

## INSTALLATION INSTRUCTIONS

### Unit On/Off toggle switch for gas-fired, power vented unit heaters for models HD/HDB, PTP/BTP



## WARNING

1. Gas supply shall be shut-off and the electrical power disconnected before proceeding with the installation. Failure to do so could result in fire, explosion, electrical shock, or the unit starting suddenly resulting in injury.
2. All units must be wired strictly in accordance with wiring diagram furnished with the unit. Failure to wire this unit according to this wiring diagram could result in a hazard to persons and property. For deviations, contact the factory.
3. All wiring must be done with a wiring material having a temperature rating of at least 105°C.
4. When the unit on/off toggle switch is in the "OFF" position, supply power remains energized at the rear of the switch. When a factory or field installed motor starting device such as a relay or contactor are present, supply power terminals of these components may remain energized even in the "OFF" position. When providing service on or near these terminals, de-energize building supply power to the unit.

## IMPORTANT

1. The use of this manual is specifically intended for a qualified installation and service agency. All installation and service of these kits must be performed by a qualified installation and service agency.
2. These instructions must also be used in conjunction with the Installation and Service manual originally shipped with the appliance being converted, in addition to any other accompanying component supplier literature which supersedes these instructions.

## Application

This kit will provide a field installed unit-mounted on/off toggle switch. Toggle switch rating is 15 amperes at 125 volts or up to ¾ HP at 125 volts.

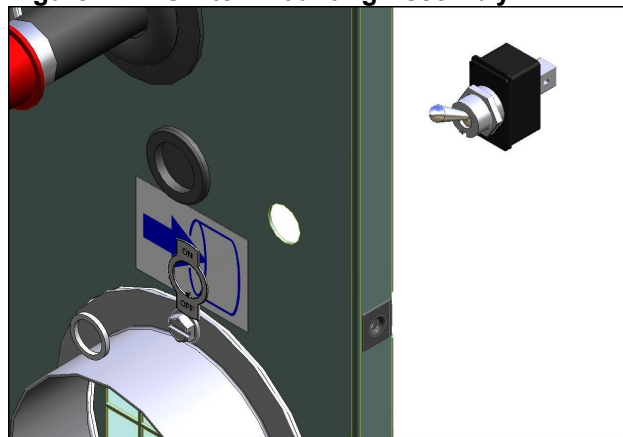
Components of this kit include:

- Toggle switch (1)
- Switch plate cover (1)
- Wire, Black with Quick Connects (1)
- Warning Label (1)

## Installation and Wiring Connections

1. Disconnect power supply before making wiring connections to prevent electrical shock and equipment damage.
2. Installation of wiring must conform with local building codes, or in the absence of local codes, the National Electric Code, ANSI/NFPA 70 – latest edition. Unit must be electrically grounded in conformance to this code. In Canada, wiring must comply with CSA C22.1, Electrical Code.
3. Install switch and switch plate in the available 1/2" dia. hole as shown in Figure 1.1.

**Figure 1.1 – Switch Mounting Assembly**

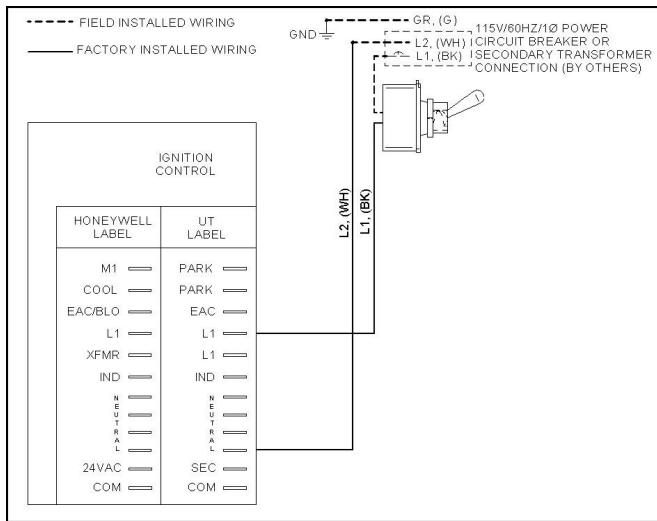


4. The unit must be wired strictly in accordance with the wiring diagram furnished with the unit. Any wiring different from the wiring diagram could result in a hazard to persons and property. See Figure 2.1 for the applicable wiring diagram.

THIS MANUAL IS THE PROPERTY OF THE OWNER.  
PLEASE BE SURE TO LEAVE IT WITH THE OWNER WHEN YOU LEAVE THE JOB.

Modine Manufacturing Company has a continuous product improvement program, and therefore reserves the right to change design and specifications without notice.

**Figure 2.1 – Switch Wiring Diagram**



5. Attach power lead (black) from the Circuit Breaker or Secondary Transformer Connection and connect it to one switch terminal. Attach one end of wire supplied with kit to the other switch terminal and the other end to terminal L1 on the unit control board.

6. Apply the new warning label near the newly installed on/off toggle switch.

### Operation Check

1. Once the unit, thermostat, and toggle switch have been installed, turn the toggle switch to the off position and set the thermostat to create a call for heat.
2. Turn on the system circuit breaker.
3. Verify that the unit does not start or have power to the L1 terminal on the control board.
4. Turn the toggle switch on. The unit should start and operate normally.