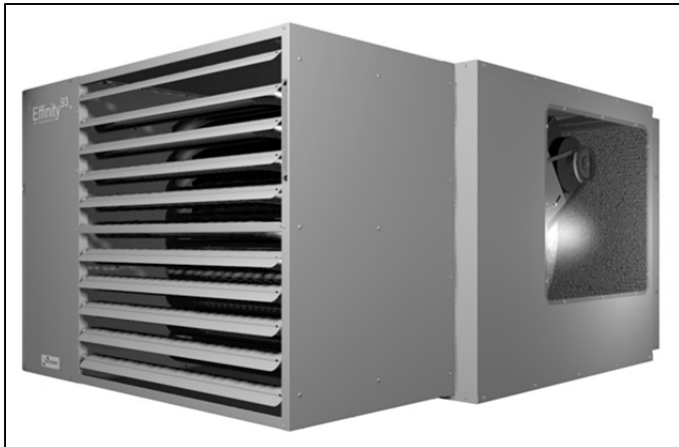


## INSTALLATION INSTRUCTIONS

### blower enclosure, filter rack and duct connector gas-fired blower unit heaters

Figure 1.1 – Blower Enclosure



#### Blower Enclosure

The blower enclosure is made available as an accessory to serve as an inlet air plenum for the attachment of a filter and/or duct work for blower type gas unit heaters. Assemble this enclosure to the unit heater prior to hanging the unit since the two rear support rods pass through the enclosure top.

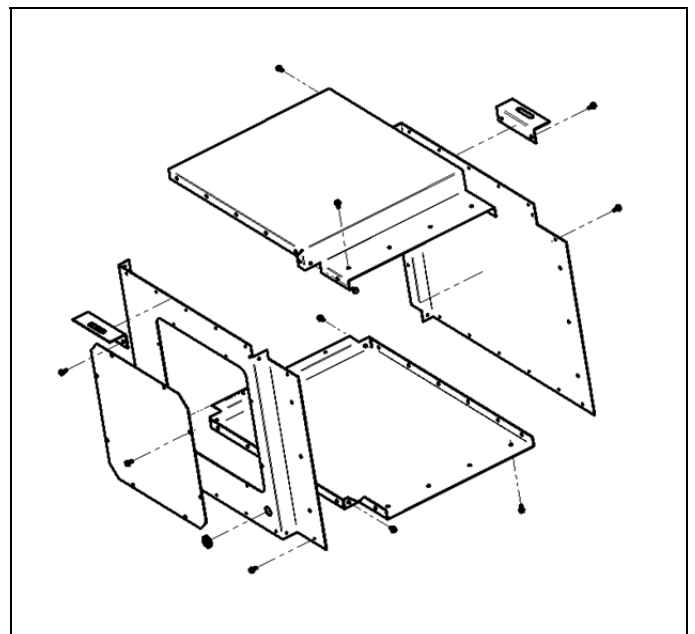
## IMPORTANT

The use of this manual is specifically intended for a qualified installation and service agency. All installation and service of these units must be performed by a qualified installation and service agency. Modine manuals may contain excerpts from component supplier literature adapted for Modine products. Any accompanying component supplier literature is for general information.

#### Procedure

1. Install dog house into top panel.
2. Assemble the four corner posts to the enclosure top and bottom as shown using sheet metal screws provided.
3. Install a pigtail of flexible conduit with adequate wiring to supply power to the unit from the unit junction box up out of the top of the blower enclosure.
4. Slide this assembly over the blower and motor and attach to the connecting flanges on the unit.
5. Assemble the two side pieces as shown in **Figure 1.2**.

Figure 1.2 Blower Enclosure Assembly



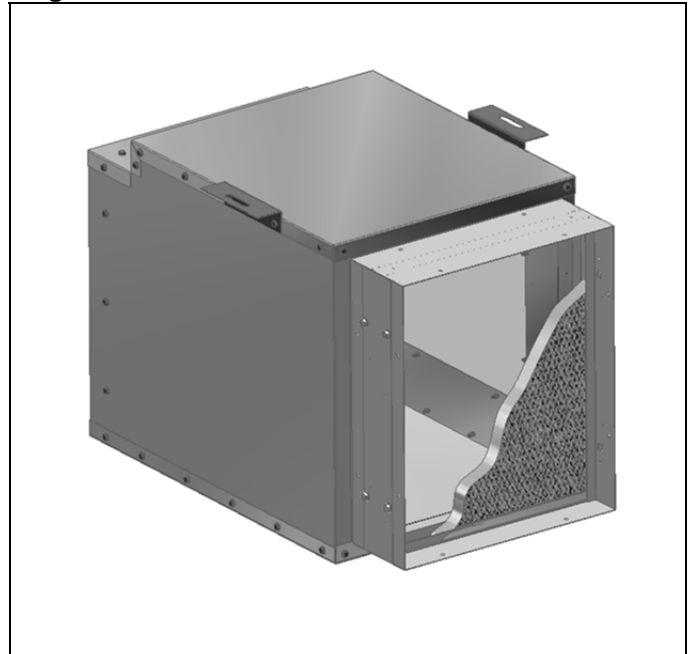
# INSTALLATION – FILTER RACK

## Filter Rack

The filter rack is shipped assembled with a 1" filter.

1. Remove filter access panel and filter.
2. Determine from which side the filter is to be serviced. Hold filter rack over flanges of blower enclosure and drill 1/8" diameter holes using the holds in the filter rack as a template. Fasten with sheet metal screws.
3. Before placing filter into position, be sure to prepare filter in accordance with filter manufacturer's instructions.

Figure 2.1 – Filter Rack



Modine Manufacturing Company has a continuous product improvement program, and therefore reserves the right to change design and specifications without notice.

Modine Manufacturing Company • 1500 DeKoven Avenue • Racine, Wisconsin, USA 53403-2552  
Phone: 1.800.828.4328 (HEAT) • [www.modinehvac.com](http://www.modinehvac.com)